

# Interim Verification Program

## Why plant clean vines?

- ❖ Clean grapevines are the key to the production of high quality wine, and necessary for the Canadian grape and wine sector to be competitive and sustainable.
- ❖ Grapevine viruses and other pathogens have become a serious threat to the health and quality of grapevines by delaying maturity, reducing soluble solids (sugar), increasing acids, and reducing the return to growers and wineries.
- ❖ Grapevine viruses are most commonly spread from an infected vine through planting material. Some viruses will quickly multiply and spread in growers fields, if vectors are present.

## How the program works:

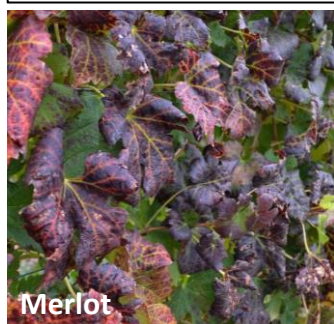
1. Grapevine field samples will be collected by a CGCN-RCCV approved entity and mapped (via GPS) for traceability.
2. Composite samples (5 plants per sample) will be tested for **four viruses of concern\*** at a CGCN-RCCV approved lab.
3. Sample collection and virus testing is at **50/50 cost-share** between the nursery facility and the CGCN-RCCV through an administered grant from AAFC.
4. Vines that test negative for the four viruses can then be used by the nursery for propagation as CGCN-RCCV verified grapevines. Results are only shared between the nursery facility and the CGCN-RCCV approved lab.
5. Propagating vines that tested negative will be audited at a reduced rate in the following year, and the vines that were tested positive are subsequently removed.

## \*Four Viruses of Concern

Grapevine Leafroll-associated  
Viruses 1 & 3

Grapevine Red  
Blotch Virus

Grapevine Pinot  
Gris Virus



Merlot



Chardonnay



Cabernet Franc



Pinot Gris

Photos: Sudarsana Poojari, CCOVI, Brock University, ON.

Look for this badge at your  
favourite Canadian Nursery

*Nursery Name* is a participant in  
CGCN-RCCV's Interim Verification  
Protocols. Testing started August 2019.

Canadian Grapevine Certification Network

**CGCN-RCCV**

Réseau Canadien de Certification de la Vigne

Please visit [www.cgcn-rccv.ca](http://www.cgcn-rccv.ca) for more details.

Visit [www.cgcn-rccv.ca/site/grapevine-certification-interim](http://www.cgcn-rccv.ca/site/grapevine-certification-interim) for more information.